



Cost management



Cost management at AECOM

As quantity surveyors our primary focus is to impart a culture of collaborative cost management amongst the entire project team; thus ensuring that we are optimising client funds at every opportunity to ensure smarter, quicker, and more cost effective solutions are being applied at each stage of a project.

Our starting point is an appreciation of the client's business case for the project. We establish our clients' needs from the outset and focus on understanding what they require from the design process and the construction supply chain.

As an industry leader in quantity surveying services for small to large capital investments, our confidence in advising on the cost implications of our clients' requirements, from the earliest stages rests on our

extensive experience, data and specialist knowledge across all market sectors and building types. We remain constantly alert to what drives value for our clients and coordinate mutual interest and thinking as an integral part of the design team.

We act as an extension of our clients' organisations, protecting their interests as our own.

We specialise in serving both public and private clients with extensive expertise in education, healthcare, local and national government, sport and leisure, transportation, commercial fit-out and developments, hospitality, culture, residential, datacentres, retail and retail developments, civil and infrastructure, aviation, bank monitoring, and mechanical and electrical cost management.

Sample clients and projects



Commercial fit-out

Novartis, JP Morgan, EY, UBS, Yahoo, Dropbox, Workday, Aviva, Goodbody, Deutsche Bank, Citi, DLR Properties, Ryanair, Dropbox, Morgan Stanley



Commercial offices

LinkedIn EMEA HQ, Central Bank of Ireland, Baggot Plaza, Capital Dock, Digital Court, DLR Properties, ESB Leopardstown, Grand Canal Square, Hanover Quay



Data centres

Telecity, Confidential Social Media Clients



Education

GDA, TCD, UCD, LIT, UCC, IT Tallaght, DoES, MIC, SAC, DCU, UL, CIT, NUIG, AIT



Culture, sports and leisure

UCD SLLS, Airfield Dundrum, West Cork Arts Centre, Curragh Racecourse, Athlone IT, BCC Leisure Transformation Program, Live Nation, UL Arena, LIT Sports Lab, Mardyke Arena Cork, Galway Racecourse, National Gallery of Ireland, Viking Triangle Waterford, Grand Canal Theatre



Healthcare

St James Hospital, University Hospital Limerick, University Hospital Galway, St. Patrick's Hospital, National Forensics Mental Health Services, Galway Clinic, Sligo University Hospital, Grangegorman, RCSI, Beaumont Hospital, Highfield Hospital, Blackrock Nursing Home



Residential

Nama, Landmark Developments, Mazars, WestHill Land & Property, Kennedy Wilson, Limerick City & County Council, NABCO, Mayo County Council, Galway City Council, Dublin City Council, Daugher's of Charity



Retail and retail developments

Brown Thomas, BT2, Beacon South Quarter, Omagh Town Centre Development, Sligo Town Centre, o2 Stores, Atlantic South Quarter, Dublin Central, Hanover Quay, daa retail, Cleary's, Marks & Spencer, Easons



Aviation

Dublin Airport Authority, Shannon Airport Authority

Airport terminals, multi-storey car parks, terminal extensions, capacity development plans, masterplanning, airfield upgrades



Utilities and industrial

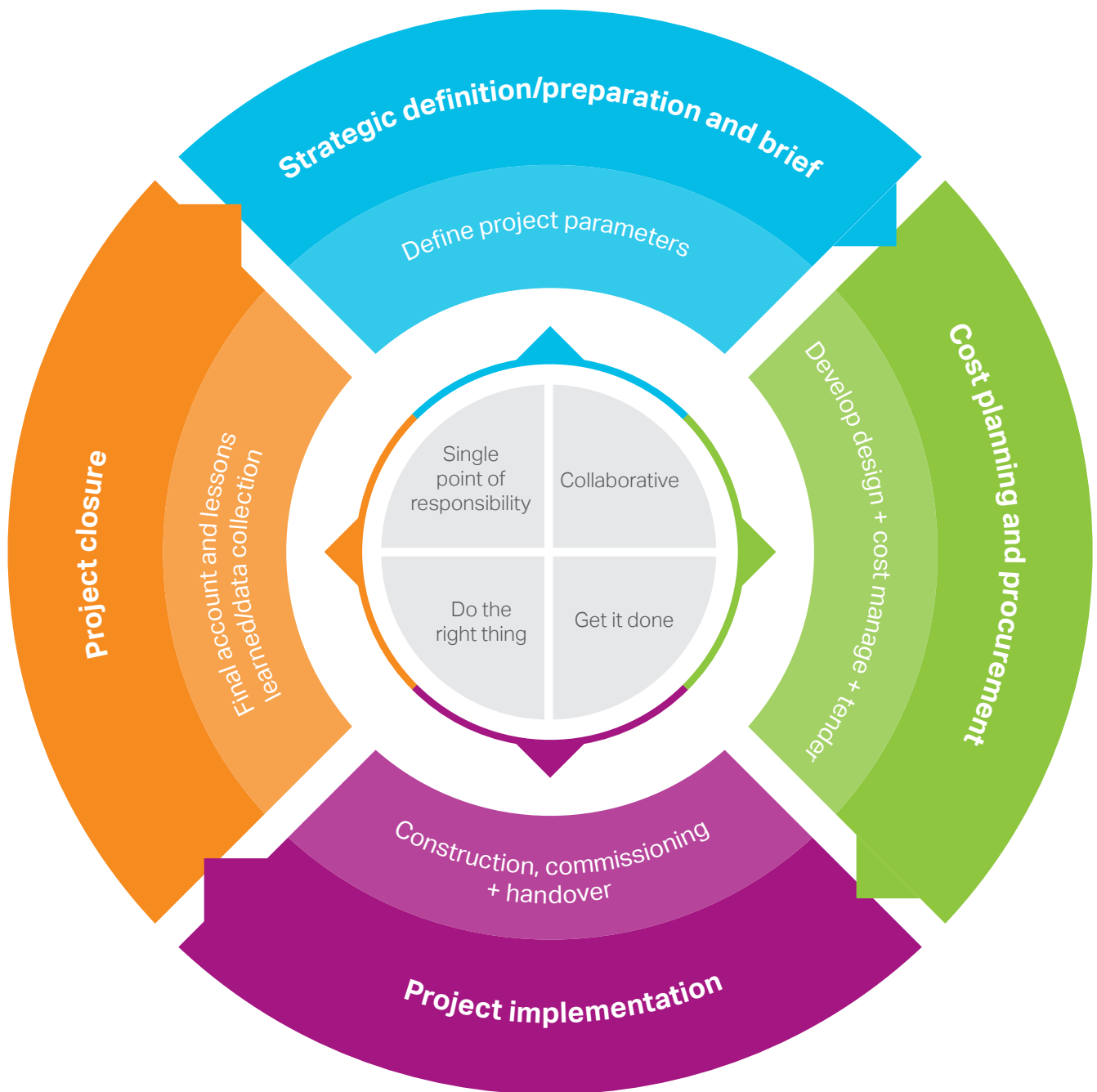
Trinity College Dublin MV Upgrade

Scope of services

- Cost management
- Risk management
- Value management
- Capital allowance
- Life cycle and whole life cycle costing
- Bank monitoring and technical due diligence
- Mechanical and electrical cost management
- Strategic procurement advice
- Reinstatement insurance valuations
- Sustainability and environmental cost advice
- Change management
- Employer's representative
- Contract administration
- Contract solutions
- Dispute resolution
- Claims mitigation
- Onsite cost management services
- Feasibility and business case



Our process



The AECOM cost management process is underpinned by a philosophy of being a client focused practice, this focus drives our teams and our processes towards maximising overall value for our clients. ”



- Key financial data for client business case development
- Benchmark analysis
- Design economics analysis
- Risk analysis/management
- Options appraisal
- Assist with the development of the initial project brief
- Early stage feasibility analysis
- Initial contractual and procurement advice
- Input into project execution plan
- Establishing project budget
- Instill a culture of cost appreciation
- Value management

- Develop detailed cost plan
- Peer review of design/maintenance of budget integrity
- Risk analysis/risk management
- Identify value
- Capital and whole life cost analysis
- Continued stakeholder engagement
- Bonds, insurance and collateral warranty advice
- Assist with development of the final project brief
- Develop contractual and procurement strategy
- Input into pre-qualification and selection of supply chain
- Sustainability cost management
- Management and preparation of tender documentation
- Management of tender process
- Development of change control strategy

- Assessment of returned tender documentation
- Preparation of detailed tender reports
- Appointment of contractors
- Preparation of contract documentation
- Implementation of bespoke cost reporting systems
- Strong "real time" cost management
- Implementation of bespoke change management protocol
- Cashflow management
- Peer review of design development/maintenance of budget integrity
- Regular client cost review meetings
- Strong stakeholder interface
- Maintain a culture of good communication
- Claims mitigation

- Timely agreement of final accounts
- Project review
- Lessons learned
- Client debrief/feedback
- Measure success
- Benchmark analysis



Project Tools

- Projectwise
- Webex
- Blue Jeans
- Costx
- Global Unite
- Electronic Project Management Plan (ePMP)
- Project Delivery System
- Auto Cad
- MS Project
- MS Excel
- MS Powerpoint
- Jabber
- Skype
- Virtual Private Network
- AECOM Project Information Centre
- Sketchup



We use a number of highly effective tools throughout the life time of a project to ensure accuracy in terms of feasibility, insightfulness in terms of buildability, and the systematic control of cost and mitigation of risk. ”

Key Contacts



John O'Regan

john.oregan@
aecom.com
D +353 1 676 3671
M +353 86 220 6327



Jason Hobson-Shaw

jason.hobson-shaw@
aecom.com
D +353 1 676 3671
M +353 86 386 6602



Tomas Kelly

tomas.kelly@
aecom.com
D +353 91 530 199
M +353 86 809 2235



Mark Smith

mark.smith2@
aecom.com
D +353 1 676 3671
M +353 87 649 0106



Patrick Dooley

patrick.dooley@
aecom.com
D +353 1 676 3671
M +353 86 011 1925



Will Cagney

will.cagney@
aecom.com
D +353 1 676 3671
M +353 86 220 6327



Nick McPhilemy

nick.mcphilemy@
aecom.com
D +353 1 676 3671
M +353 86 1300 105



David Coleman

david.coleman@
aecom.com
D +353 1 676 3671
M +353 86 411 0953



Ciaran Timpson

ciaran.timpson@
aecom.com
D +353 1 676 3671
M +353 86 023 0712



Claire Culleton

claire.culleton@
aecom.com
D +353 1 676 3671
M +353 86 021 8406



Glenn Hanna

glenn.hann@
aecom.com
D +353 21 436 5006
M +353 86 887 0384



Paul Walshe

paul.walshe@
aecom.com
D +353 61 318 870
M +353 87 616 7922



Jody Wilkinson

jody.wilkinson@
aecom.com
D +44 2890 607 200
M +44 7918 802 672



Tom Hansberry

tomas.hansberry@
aecom.com
D +353 9 150 199
M +353 87 648 1844



Gerry Coghlan

gerry.coghlan@
aecom.com
D +44 2890 706 628
M +44 7801 096 886

Dublin

24 Lower Hatch Street
Dublin 2
D02 TY88
+353 (0) 1 676 3671

4th Floor, Adelphi Plaza
Georges St Upper
Dun Laoghaire
Co. Dublin
+353 (0) 1 238 3100

Derry/Londonderry

River House, 12-14 John Street
Londonderry
BT48 6JY
+44 (0) 28 7126 9676

Belfast

Beechill House
40 Beechill Road
Belfast
BT8 7RP
+44 (0) 28 9070 5111

9th Floor, The Clarence West Building
2 Clarence St West
Belfast
BT2 7GP
+44 (0) 28 9060 7200

Cork

Douglas Business Centre
Carrigaline Road, Douglas
Cork
T12 P088
+353 (0) 21 436 5006

Galway

Block 6, Galway Technology Park
Parkmore Galway
H91 W3OF
+353 (0) 91 530 199

Limerick

Unit 3, Second Floor
Riverfront Offices
Howley's Quay
Limerick
+353 (0) 61 318 870

About AECOM

AECOM is built to deliver a better world. We design, build, finance and operate infrastructure assets for governments, businesses and organizations in more than 150 countries. As a fully integrated firm, we connect knowledge and experience across our global network of experts to help clients solve their most complex challenges. From high-performance buildings and infrastructure, to resilient communities and environments, to stable and secure nations, our work is transformative, differentiated and vital. A *Fortune 500* firm, AECOM had revenue of approximately \$17.4 billion during fiscal year 2016. See how we deliver what others can only imagine at aecom.com and [@AECOM](https://twitter.com/AECOM).

Contact

John O'Regan

Director

Head of Programme Cost Consultancy, Ireland

T +353 1 676 3671

E john.oregan@aecom.com