

# Middle East

**We are AECOM.  
Built to deliver  
a better world.**



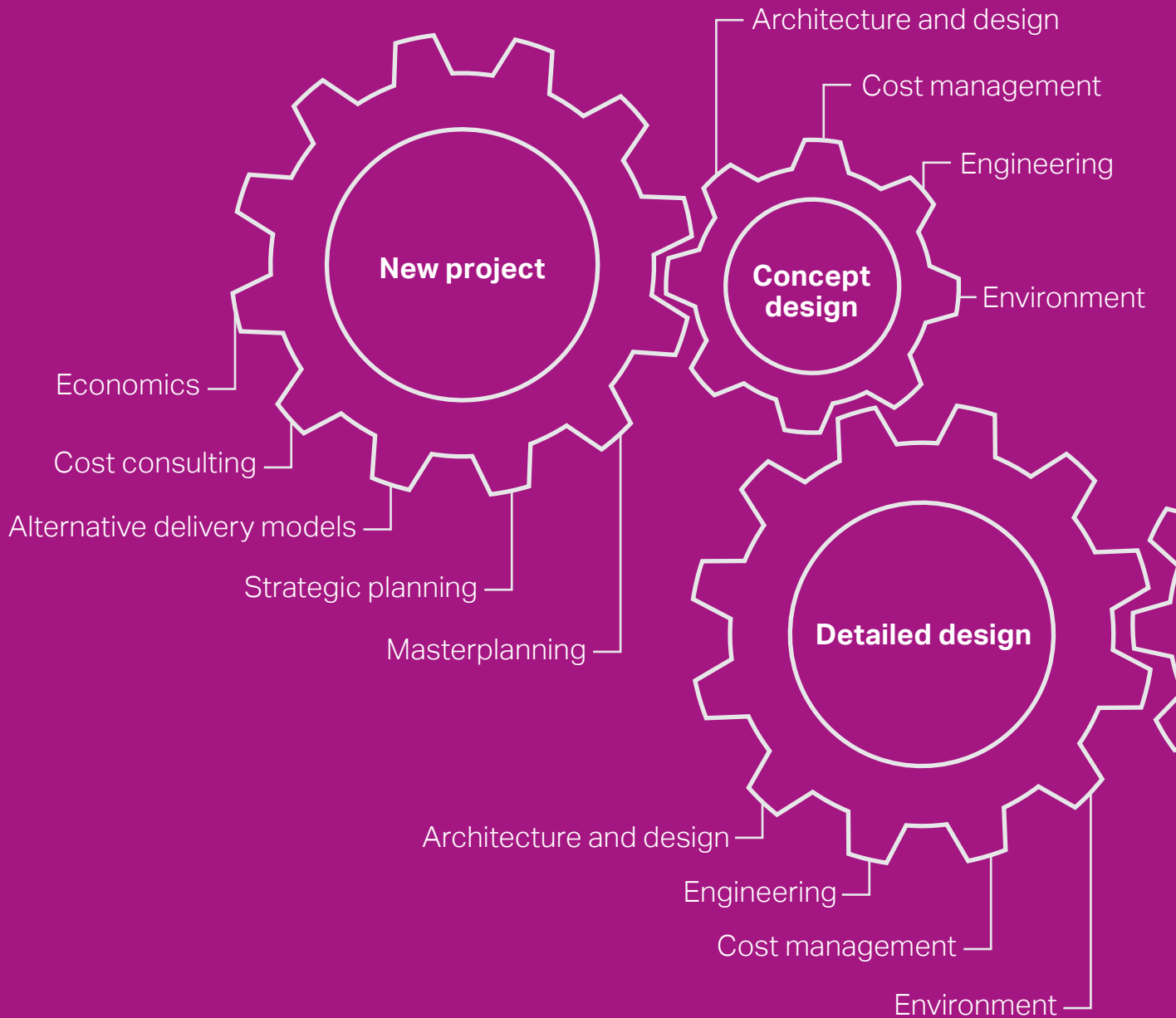


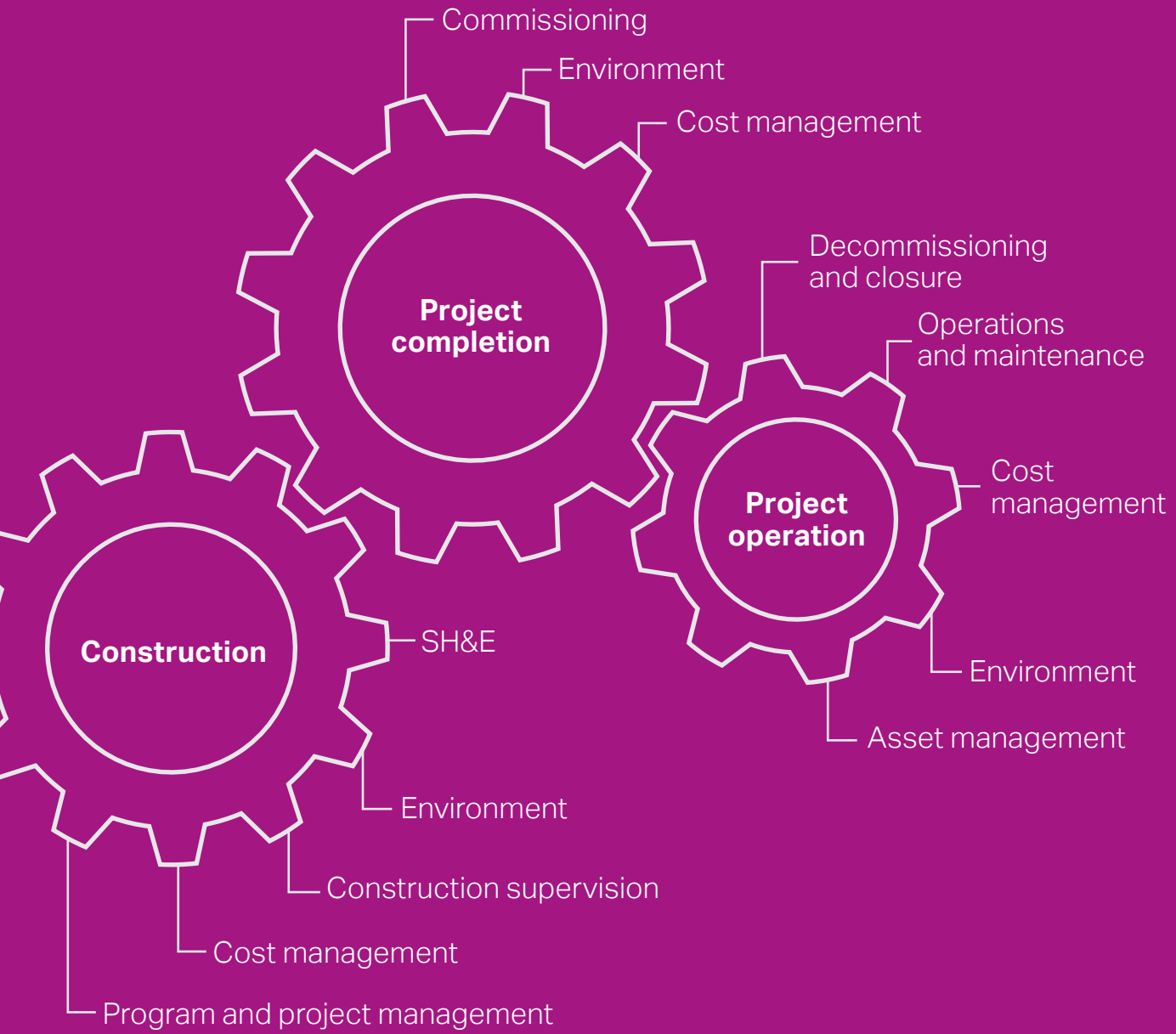
Governments and organizations rely on us to anticipate and address their complex challenges and **deliver inspirational solutions** for their schemes. Shaping cities. Delivering clean water and energy. Building iconic skyscrapers. Connecting people and economies with roads, bridges, tunnels and transit systems.

We collaborate to connect knowledge and experience across practices, markets and geographies — **daring and dreaming** to re-imagine what can be achieved. Our expertise spans all phases of the development life cycle — design, build, finance, operate and manage.

Our integrated approach delivers operational excellence, flawless execution and **transformational outcomes** for clients, communities and the planet.

**Our integrated offer enables us to clarify complexity on projects of any scale and add value through all stages of the project lifecycle.**





# Globally

152+ countries

7 continents

\$18.2 billion revenue

# Locally

60 years' experience

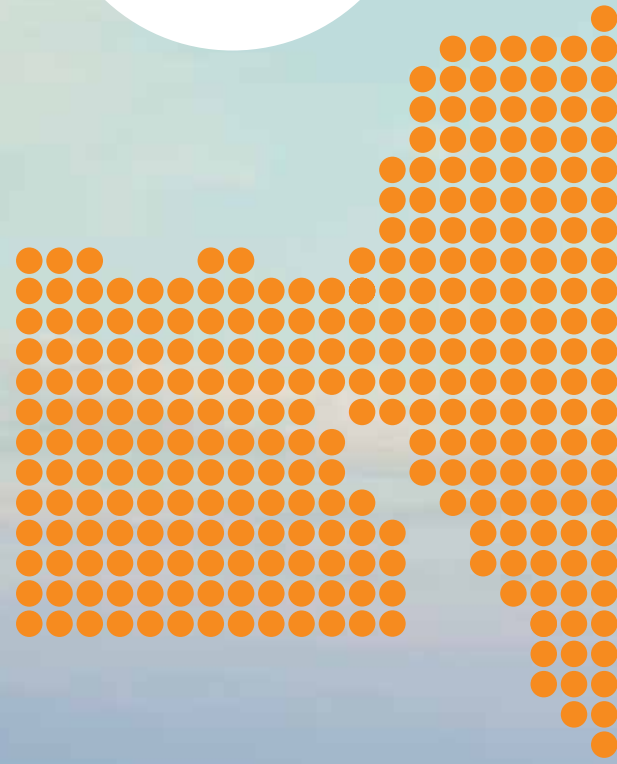
3,800 people

Iconic projects  
across all sectors

## Kuwait

### Projects include:

Mubarak Al Kabeer Port,  
Central Bank of Kuwait,  
Kuwait International  
Airport – T2



## Kingdom of Saudi Arabia

### Projects include:

King Khalid International Airport,  
MEWA Dams,  
Haramain High Speed Rail,  
Jezan Economic City,  
Jeddah Stormwater  
Drainage Program,  
Saudi Customs EPMO



### **Qatar**

#### **Projects include:**

Al Wakrah Stadium,  
Hamad Port, Doha Oasis,  
IDRIS, Al Waab City,  
Lusail Expressway  
& Artscape

### **Oman**

#### **Projects include:**

Mall of Oman,  
Duqm Frontier Town,  
Ras Al Hamra,  
PASI Mixed-use Development,  
Al Amerat STP,  
Mazoon Dairy

### **United Arab Emirates**

#### **Projects include:**

DAMAC Heights,  
Warner Bros. World, Abu Dhabi,  
Al Maryah Central, Wahat Al Karama,  
Etihad Rail Stage 1,  
Expo 2020 Interchanges,  
Midfield Terminal Complex

### **Bahrain**

#### **Projects include:**

Diyar Al Muharraq,  
Four Seasons Hotel Bahrain Bay,  
North Manama Causeway  
Phase 2, Ahlia University,  
Madinat Salman, East Sitra  
Housing Project





# Safety first

---

We are committed to maintaining a safe, healthy workplace for our employees and contractors, and delivering safe projects that benefit our clients.

---

Through strict project procedures, innovative tools and frequent communications, we are dedicated to preventing injuries to people and damage to facilities, property, equipment and the environment.

## **Safety for Life**

Safety for Life is AECOM's comprehensive internal program that drives our employees toward the company's commitment to achieving zero work-related injuries and/or illnesses; preventing damage to property and the environment; and maintaining an environmentally friendly and sustainable workplace.

Deep rooted in this program, our Culture of Caring sets an expectation for each employee, contractor and business partner to take personal responsibility for keeping their colleagues, and others associated with our work, safe.

Whether located on a project site, in the office or at home, we embrace safety as a lifestyle choice by maintaining essential safety procedures and behaviors everywhere we go.

# Our projects

## Multi-award winning iconic towers on Abu Dhabi corniche.

An integral component to Abu Dhabi's skyline, Etihad Towers has become one of the city's most recognizable buildings.

The building consists of five elegant towers. The four-level parking garage accommodates more than 3,000 cars. The hotel, Jumeirah at Etihad Towers, is a 280-meter tall luxury hotel and recipient of the World's Leading New Hotel for 2011 accolade and *Construction Week's* GCC Project of the Year award in 2011.

Our global team of professionals contributed to the project's success with specialists from Hong Kong providing structural engineering design and architects in the UAE completing the engineering design, detailed architecture design and construction supervision services.

The services provided also included the preparation of the full structural and MEP construction documents.

This project sets the vision of a new style of development in Abu Dhabi that combines contemporary design, luxurious accommodation and facilities, and top class offices, retail and food and beverage outlets.

### **AECOM services:**

- Construction documentation package (architectural, structural & MEP) during the design development stage.
- Construction supervision during the construction stage.





Middle East



**DAMAC**  
DAMAC HEIGHTS

# DAMAC Heights

Dubai, UAE

Branded by Fendi, the luxury Italian fashion house, DAMAC Heights comprises 96 floors, making it the fifth tallest building in Dubai Marina.

Construction for the now-iconic tall tower was completed in early 2016, with the last concrete tower slab cast at a height of 310 meters. The remainder of the structural steel roof feature continues for an additional 30 meters. The tower has claimed the spot of the seventh tallest residential building in the world.

Primarily a luxury residential tower, the building boasts 641 units of 1, 2, 3 and 4-bedroom apartments, of which 357 are standard apartments and the other 284 Fendi branded. The building is supported by 709 car parking spaces and two retail outlets.

Upon completion, the project had achieved 16.5 million hours without a lost time incident for the entire duration of AECOM's engagement. During construction, the site was used by Dubai Civil Defence for high-rise firefighting training to test operational readiness to fight fires on active high-rise construction sites.

**AECOM services:**

- Architect of record
- Construction supervision
- Project management
- Design peer review



# Warner Bros. World™

## Abu Dhabi, UAE

Warner Bros. World Abu Dhabi joins the multitude of attractions on Abu Dhabi's entertainment and leisure destination, Yas Island.

Spread across 15 hectares (the size of 21 football fields), Warner Bros. World Abu Dhabi is the world's largest indoor theme park.

Visitors can enjoy 29 state-of-the-art exhilarating rides, interactive family-friendly attractions and unique live entertainment, located across six immersive lands — Gotham City, Metropolis, Cartoon Junction, Bedrock, Dynamite Gulch and Warner Bros. Plaza.

Our team was involved since the project's inception, providing design consultancy and construction supervision services. We brought together master planners, economists, architects, engineers, and show set design-build vendors

located in Orange County, London and Abu Dhabi to deliver this outstanding attraction. Throughout the project, our construction supervision team nurtured a committed safety culture by rewarding positive safety behaviors and actively engaging with the construction contractor.

Key attraction and facility design features include:

- Warner Bros. Plaza – the park's hub and venue for high-impact audio visual shows.
- A dramatic guest entrance that connects the six immersive lands.
- Themed retail and dining outlets throughout the park.

### **AECOM services:**

- Design consultancy
- Architectural, structural and MEP engineering
- Construction supervision



# Connected expertise

Water quality is one of the biggest challenges in Abu Dhabi, with tap water having a higher than normal chlorine content. Tasked with completing a comprehensive study of the water quality in the Al Raha Beach area our team developed a mathematical equation creating a direct relationship between the consumers and the chlorine injected at tie-in points considering different variables such as temperature, flow, velocity, residual chlorine and the amount of air entered into the system.

# Al Raha Beach Development

Abu Dhabi, UAE

One of the most prestigious projects in Abu Dhabi, the Al Raha Beach Development has totally transformed the western approach to the city. With eight kilometers of water frontage it was designed to be the Great Arabian Water City and home to 120,000 people. This iconic development provides some of the finest waterfront communities in the United Arab Emirates.

Over a period of nine years, AECOM provided fully integrated civil infrastructure services including transportation, energy, water, and landscape design, marine and environmental services.

The iconic project won the National Transport Project of the Year award at the *MEED* Quality Awards in 2015.

**AECOM services:**

Integrated civil infrastructure design including:

- Transportation
- Energy
- Water
- Landscape
- Marine and environmental services

# New Port Project

Qatar

## Clarifying complexity

When you think of building the world's largest 'greenfield' port project, complex is one of the first words to come to mind. With complexity comes the numbers. A quay measuring 26 kilometers long and 17 meters deep, the capacity to handle 1.7 million tons of cargo a year, 58,000 precast blocks, 130 million cubic meters of excavated material, and a 16,000 strong workforce to make this vision a reality.



Undertaken by the State of Qatar, the USD 7 billion New Port Project is currently the world's largest 'greenfield' port project under development. Construction commenced in 2011 with the first commercial ships arriving in 2016.

The port is designed to act as a catalyst for Qatar's economic growth and trading industry, with its

completion critical for importing the materials required to construct the facilities for the 2022 FIFA World Cup Qatar.

The New Port Project comprises three developments: Hamad Port, a new 4.5 square kilometer base for the Qatar Emiri Naval Forces, and a canal for a new economic zone located to the north of the port.

**AECOM services:**

AECOM has been retained since 2008 to provide comprehensive program management services.



# Transformational outcomes

We consider outcomes that transform entire communities. This project saw our team respond to extraordinary circumstances, including a tripling population and the aftermath of a catastrophic storm. We created a plan to reshape and revive the city into an innovative hub.



# Jeddah Strategic Plans

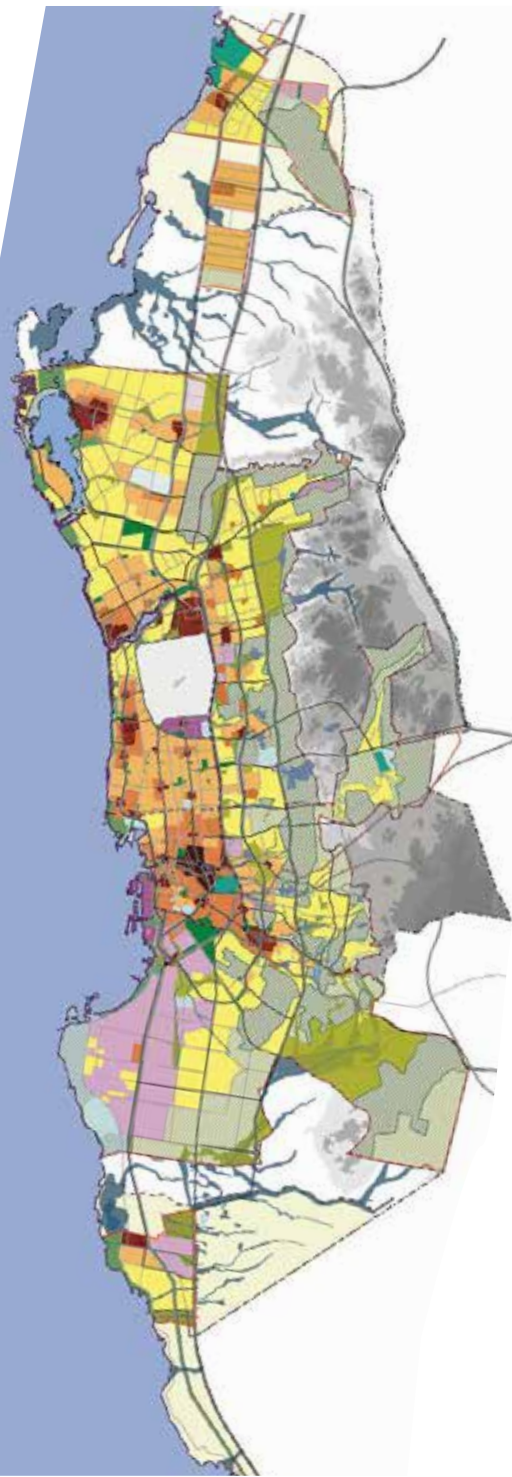
## Kingdom of Saudi Arabia

As the principal gateway to Makkah and Medinah, Jeddah is a key urban hub in the Middle East. Over recent decades it has experienced unprecedented population growth, rising from 50,000 residents in the 1940s to nearly three million today. This extraordinary rate of change has resulted in fragmented development. The repercussions of a catastrophic storm in 2010 added to the challenges of developing the city.

Against this background comes the Jeddah Strategic Plans, a framework for sustainable and balanced future growth. In partnership with the Jeddah Municipality, we delivered plans to redefine the city's future character, creating a series of well-connected centers and a network of quality open spaces, with improved access to amenities and transport. This project was on a huge scale and involved an unprecedented number of stakeholders to consult, critique and reach consensus on a new path forward for Jeddah.

### **AECOM services:**

- Urban and spatial planning
- Landscape and public realm
- Infrastructure and utilities
- Strategic planning
- Environmental sustainability



# Madinat Salman

## Bahrain

The Ministry of Housing has engaged AECOM to provide masterplanning, detailed design and cost management services for this large project in the Kingdom of Bahrain.

Madinat Salman is a group of 10 reclaimed islands situated on the northern coastline, a few kilometers away from the city of Manama.

The development comprises residential accommodation with lifestyle, commercial and retail facilities to support the community.

AECOM is responsible for the full design of electrical power cables, street lighting, telecommunication network and a conceptual bridge design.

### **AECOM services:**

- Concept and detailed masterplanning
- Architecture
- Cost management
- Infrastructure design



# Midfield Terminal Complex

Abu Dhabi, UAE





AECOM is providing construction management services for the largest building in Abu Dhabi. Earmarked to become one of the region's most architecturally impressive structures, the new Midfield Terminal Building is being developed as an iconic gateway to Abu Dhabi for the projected growth of 40 million people per annum who will pass through the airport terminal by 2025.

Based to the west of Abu Dhabi, the mega-structure is rising from the ground in the midst of the still-functioning busy Abu Dhabi airport – a complex logistical challenge that the team is meeting head-on. AECOM is providing the technical expertise to transform the airport experience for millions of people in the UAE capital.

**AECOM services:**

- Construction management
- Construction supervision
- Cost management
- Contract management
- Sustainability

# Lusail Expressway

## Doha, Qatar

One of more than 70 projects being delivered under ASHGHAL's Expressway Programme, Lusail Expressway establishes an efficient 5 kilometer link between Doha's central business hub, West Bay, and two of its most significant residential and commercial districts, The Pearl and Lusail.

Lusail Expressway provides road users with four lanes in each direction, and includes the construction of three complex multi-level interchanges comprising an array of flyovers and tunnels, and two additional bridges, which cross over the West Bay Lagoon canals. The public also have access to pedestrian and cycle paths lining the Expressway, providing social and environmental benefits as well as a healthy alternative for residents.

AECOM provided design services for the monumental project, including tunnel ventilation and traffic systems. Our team is providing consultation during the construction phase, working with main contractor.

In a parallel contract with ASHGHAL, AECOM provided architectural design for the Lusail Artscape. The Artscape features iconic arches standing 100 meters tall over one of the project's key interchanges.

Driven by Qatar National Vision 2030 and catering to the 2022 FIFA World Cup, the Qatar Expressway Programme will deliver a world-class new and upgraded road infrastructure network designed to improve highway capacity, connectivity and safety to meet current and future demands of population and economic growth.

In 2018, Lusail Expressway was named Global Best Project in the Road/Highway category by *Engineering News-Record (ENR)*.

#### **AECOM services:**

- Highway design
- Architectural design
- Tunnel ventilation
- Traffic systems





# Kuwait Oil Company Air Quality

## Kuwait

Since the Paris Agreement, the Kuwait Oil Company (KOC) has shown great commitment to reducing their greenhouse gases (GHGs), setting a target of 20 percent reduction by 2020.

With no existing national system in place to reduce emissions, AECOM has been developing a GHG reduction strategy for KOC that is being used across the entire country.

One of the largest air quality consultancy contracts ever awarded to a single company anywhere in the world, the five-year project involves several strategies to control emissions.

We are using satellite technology and advanced air quality monitoring techniques to pinpoint pollution 'hot spots' and monitor air pollution in real time across the country to determine the risk to humans.

We are also putting a GHG monitoring network and air management system in place and developing a nationwide regulatory permitting and compliance system.

The project goes further than air quality management by focusing on GHG emissions and carbon management, setting the standard for collaboration between oil companies and government agencies throughout the Gulf.

### **AECOM services:**

- Air quality assessment and management







# Tatweer Schools

## Kingdom of Saudi Arabia

With the aim of revitalizing Saudi Arabia's educational system and enhancing its learning facilities, Tatweer Buildings Company (TBC) appointed AECOM to support the delivery of thousands of educational facilities across KSA.

The scope of the project comprises the construction of both primary and secondary schools in all 13 provinces.

We are providing program management (PMO), construction management, capability building training and concept design for the project, which is expected to be completed in 2018. We have set up a PMO for the client, are delivering the program strategy, an execution plan, and complete policies and procedures to establish the client's organizational structure, corporate and core business policies, as well as an operational framework.

Through the implementation of measures to track the progress of the project through on-site cameras, we have been able to establish an integrated dashboard and real-time monitoring of construction progress. Key project performance indicators are being tracked through the use of innovative software.

**AECOM services:**

- Program management
- Construction management
- Concept design
- Capability training

### **Construction Innovation Awards 2018**

SH&E Initiative of the Year

### **Construction Innovation Awards 2017**

Consultant of the Year

SH&E Initiative of the Year

### **Construction Week Oman Awards 2017**

Consultant of the Year

### **Middle East Consultant Awards 2016**

Multi-discipline Consultant of the Year

### **Construction Week Awards 2015**

GCC Consultant of the Year

### **Fortune Magazine**

Named one of *Fortune's* World's Most Admired Companies for the last four years

### **Military Friendly**

Top 100 Military Friendly Employer for 13 consecutive years

### **ENR Global Best Projects 2018, Road/Highway Award**

Lusail Expressway,  
Doha, Qatar

### **Construction Week Oman Awards 2018, Residential Project of the Year**

PASI Mixed-use Development,  
Oman

### **MENA Green Building Awards 2018, Green School Building of the Year**

Al Mamoura Academy,  
Abu Dhabi, UAE

### **MEED Quality Awards 2017, UAE Road, Bridge, Tunnel Project of the Year**

Sheikh Mohammed bin Rashid  
Al Maktoum Road,  
Dubai, UAE

### **MEED Quality Awards 2016, GCC Rail Project of the Year**

Etihad Rail Stage 1,  
Abu Dhabi, UAE

### **ENR Global Best Projects 2015, Award of Merit for Rail**

Etihad Rail Stage 1,  
Abu Dhabi, UAE



PASI Mixed-use Development  
Oman



**Winner**  
of Residential Project of the Year  
at the 2018 *Construction Week*  
Oman awards.

# Our services



## Architecture

- Interior design and strategy
- Renovation and reuse
- Sustainability

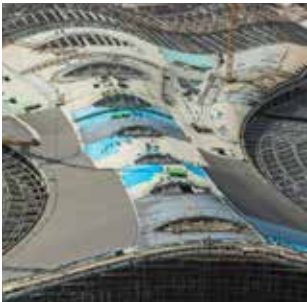


## Building Engineering

- Building structures
- Mechanical, electrical and plumbing
- Security and IT systems
- Specialisms
- Specialty structures
- Sustainability
- Technology solutions

## Construction Services

- Construction
- Pre-construction
- Program management
- Project management
- Sustainability
- SH&E



## Design + Planning

- Landscape architecture
- Masterplanning + urban design
- Environmental and ecological



## Economics

- Economic development
- Leisure economics
- Redevelopment/ regeneration
- Sustainable economics
- Transportation + infrastructure economics



## Energy

- Energy efficiency and carbon management
- Energy planning, environmental and economics
- Hydropower and dams
- Thermal, geothermal and nuclear
- Transmission and distribution
- Wind and solar

**Environment**

- Air quality
- Alternative delivery solutions
- Corporate advisory and sustainability services
- Environmental, health and safety management
- Impact assessment and permitting
- Remediation services and site restoration
- Specialty and emerging technologies
- Waste services
- Water and natural resources



**Program Management**

- Delivery and contracting strategies
- Knowledge transfer and training
- Master scheduling
- Risk management
- Value engineering



**Transportation**

- Long-span bridges
- Tunnels
- Intelligent transportation systems (ITS)
- Tolling
- Transit-oriented development



**Program, Cost, Consultancy**

- Building surveying
- Cost management
- Capital allowances consulting
- Design management
- Development management
- Facilities management
- Health and safety consulting
- Legal support
- Management consulting
- Market intelligence
- People, place and performance consulting
- Project management
- Property consulting
- Specification consulting
- Sustainability consulting
- Valuation services
- Value and risk consulting

**Water**

- Wastewater treatment and re-use
- Flood and stormwater management
- Asset management and maintenance
- Water treatment and distribution systems
- Surface and groundwater assessments and supply
- Hydraulic and hydrological modelling
- Water resources planning
- Water transmission and distribution
- Reservoirs and dams



## About AECOM

AECOM is built to deliver a better world. We design, build, finance and operate infrastructure assets for governments, businesses and organizations in more than 150 countries. As a fully integrated firm, we connect knowledge and experience across our global network of experts to help clients solve their most complex challenges. From high-performance buildings and infrastructure, to resilient communities and environments, to stable and secure nations, our work is transformative, differentiated and vital. A *Fortune 500* firm, AECOM had revenue of approximately \$18.2 billion during fiscal year 2017. See how we deliver what others can only imagine at [aecom.com](http://aecom.com) and [@AECOM](https://twitter.com/AECOM).